



A Leading  
Stones Company in the  
Arab World and Beyond

Profile 2026

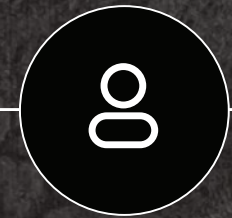
A subsidiary of  
 **Estithmar**  
Holding استثمار القابضة

► **Estithmar**  
Holding استثمارة القابضة

# 4 Clusters



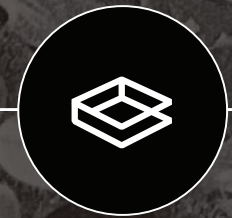
HEALTHCARE



SERVICES



VENTURES



CONTRACTING &  
INDUSTRIES



THE VIEW HOSPITAL  
KOREAN MEDICAL CENTER  
SYRIAN AMERICAN MEDICAL CENTER  
EWS - MEDICAL SERVICES CONSULTANCY  
ALGERIAN QATARI GERMAN HOSPITAL



CATERING  
FACILITIES MANAGEMENT  
RESOURCES  
GABRO  
SUPPLY & TRADING  
ARABIA



AL MAHA ISLAND  
MAYSAN DOHA  
KATARA HILLS  
EQUESTRIAN CLUB  
RIXOS BAGHDAD  
ROSEWOOD RANFARU MALDIVES



MEP  
LANDSCAPE  
MARINE  
CONTRACTING  
KITCHENS  
CESCO  
WATER SOLUTIONS  
SWITCHGEARS  
STEEL  
JOINERY  
STONES  
ARABIA



# A Leading Stones Company in the Arab World and Beyond

elegancia stones, a subsidiary of Estithmar Holding has two divisions: The Trading Division sells stone slabs and has a wide variety of stone types and colors, stored in elegancia stones' production facility and the Contracting Division providing full services for supply and installation of stone works to local contracting companies.

elegancia stones contracting division has three main departments that serve the supply and installation of project requirements: The technical departments, supported by a team of professional engineers and craftsmen; the fabrication department, equipped with the most up to date CNC machines for all types of fabrication requirements and; the installation department, assisted by experienced staff and labors for all types of installation works.

## Key Facts

+1,000

Manpower

+23,000sqm

Facilities

+83

Marble Lines

A subsidiary of



**Purpose**  
To add value to  
the society for a  
better lifestyle

## **Vision**

**Creating a brighter  
future from Qatar to  
the world**

## **Mission**

**To drive impactful growth  
through excellence in  
healthcare, services, real  
estate, and specialized  
contracting—creating  
value, enriching communities,  
and shaping a sustainable  
future from Qatar to the  
world.**

## **Values**

**Leadership  
Accountability  
Quality  
Agility**

## **Guiding Principles**

**Preserve Corporate Reputation  
Develop Future Leaders  
Promote Innovation**

# Our Facilities



Skilled Experts



Cutting-edge Machineries



Best Practices in Health & Safety

## Skilled Experts



elegancia stones team of experts and skilled workers meticulously deliver professional work with their combined expertise in production. Workers undergo regular training to learn modern techniques in the industry.



## Cutting-edge Machineries



elegancia stones team of experts and skilled workers meticulously deliver professional work with their combined expertise in production. Workers undergo regular training to learn modern techniques in the industry.

## Best Practices in Health & Safety



The production facility executes best safety measures implemented in all levels of operations, reviewed on a regular basis. Consequently, all staff exposed to equipment and machineries are not only trained to be skilled craftsmen, but also schooled in the best practices of Health & Safety.

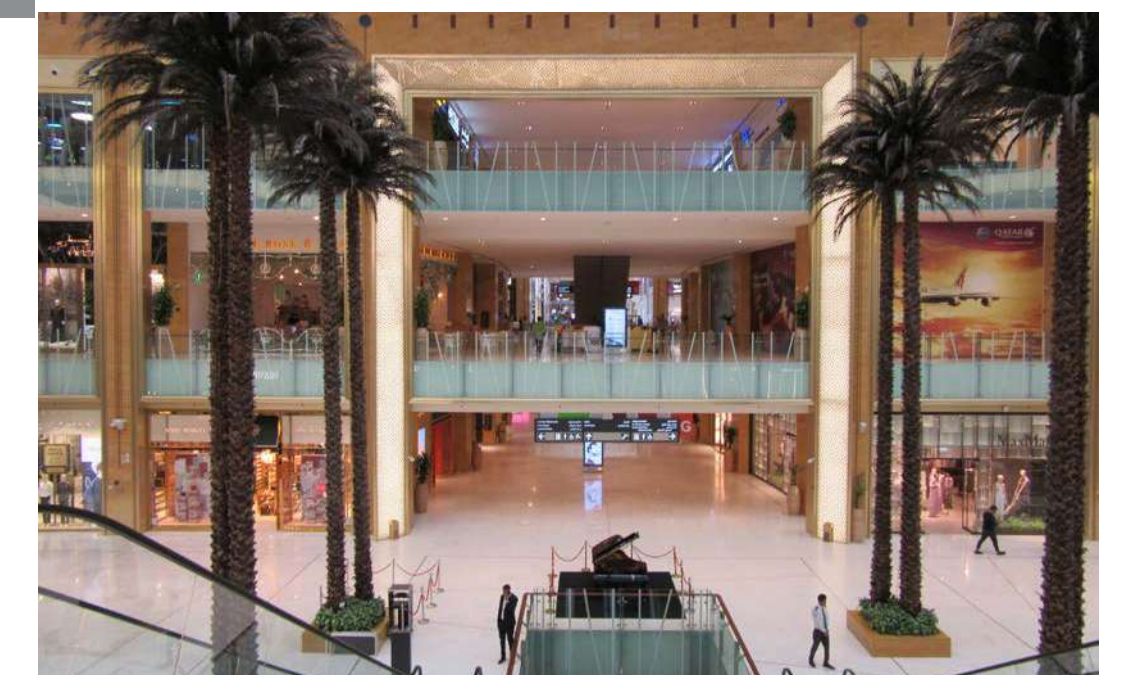
A dark, monochromatic photograph of a large industrial machine, possibly a paper mill or textile loom, with the text "Our Projects" overlaid in white. The machine features several large, cylindrical components and a complex arrangement of pipes and structural elements. The lighting is dramatic, highlighting the textures and forms of the machinery against a dark background.

# Our **Projects**



## Mall of Qatar

Scope of Work : Supply and installation of marble works  
Total Built Up Area : 460,247 m<sup>2</sup>  
Location : Al Rayyan, Qatar





## Hilton Double Tree Hotel

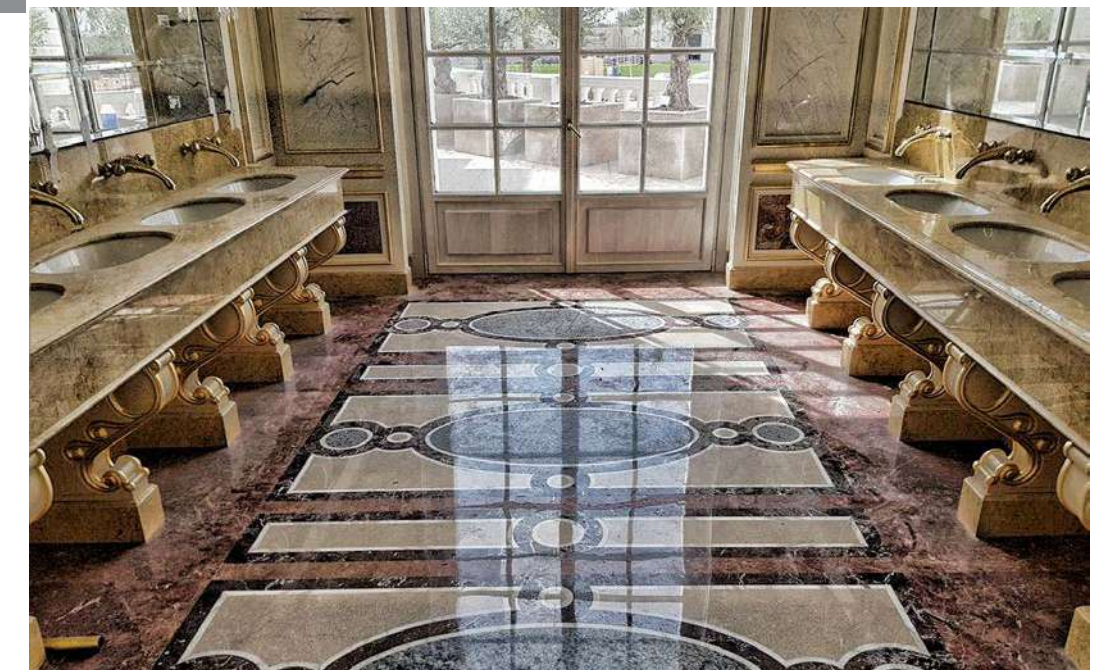
Scope of Work : Supply and installation of marble works  
Total Built Up Area : 460,247 m<sup>2</sup>  
Location : Al Rayyan, Qatar





## Union Tower Hotel

Scope of Work : Installation of Stone Works  
Total Built Up Area : 11,300 m<sup>2</sup>  
Location : Doha, Qatar





## Com39 Tower

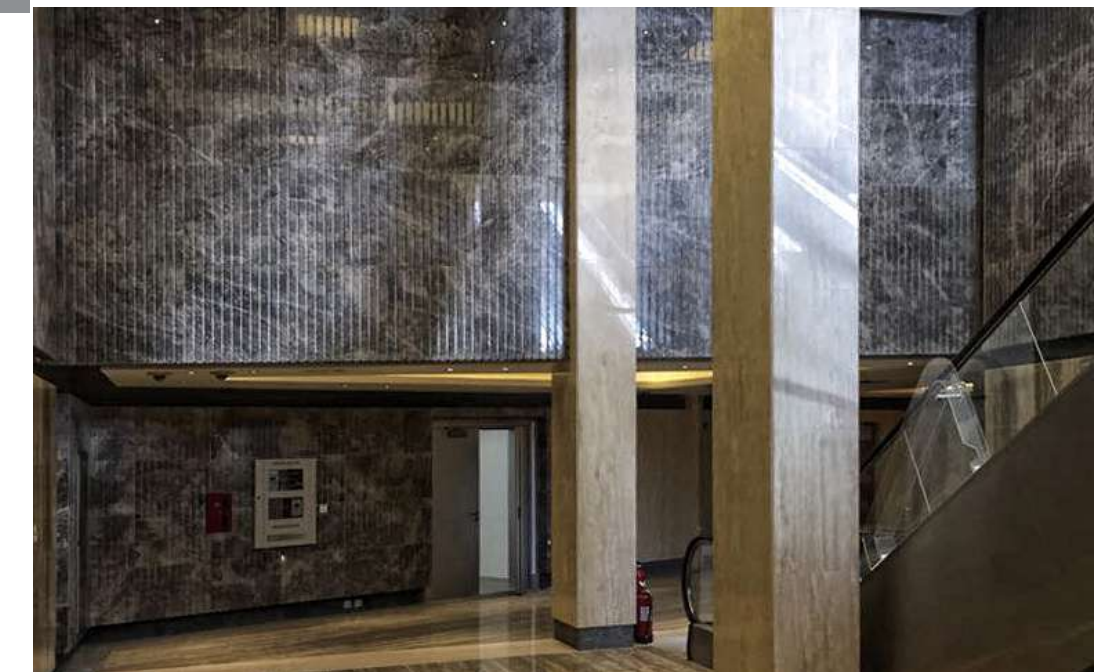
Scope of Work : Supply and installation of marble works  
Total Built Up Area : 39,440 m<sup>2</sup>  
Location : Lusail, Qatar





## Souq Najada

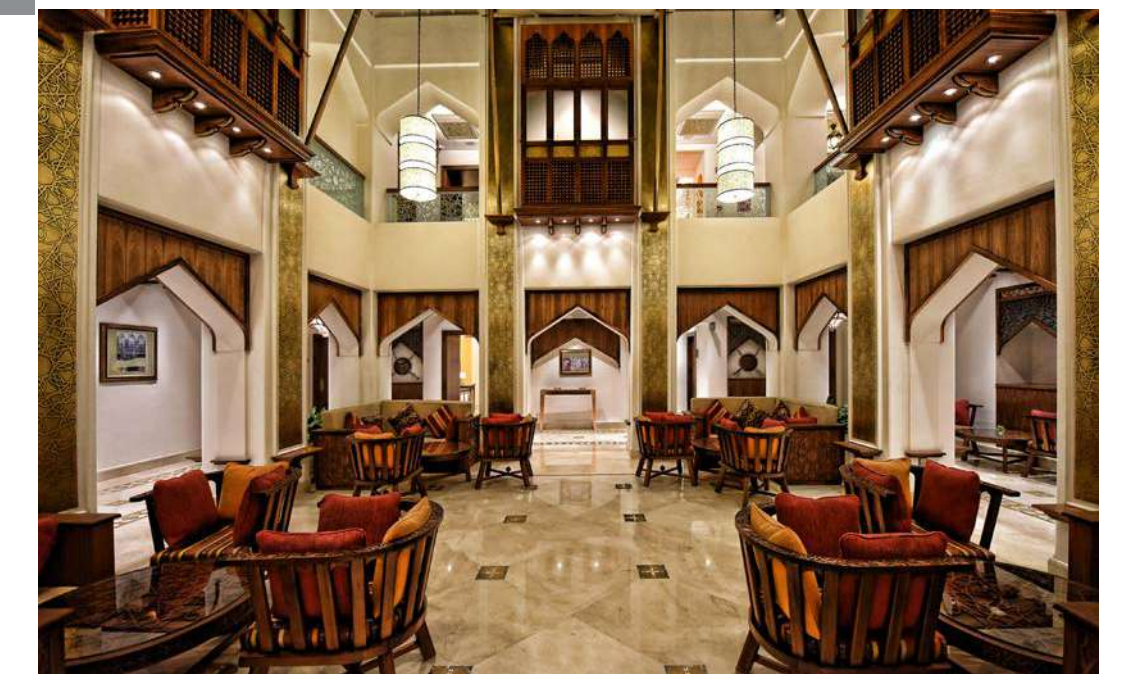
Scope of Work : Supply and installation of marble works  
Total Built Up Area : 1,102 m<sup>2</sup>  
Location : Doah, Qatar





## Souq Waqif Hotel

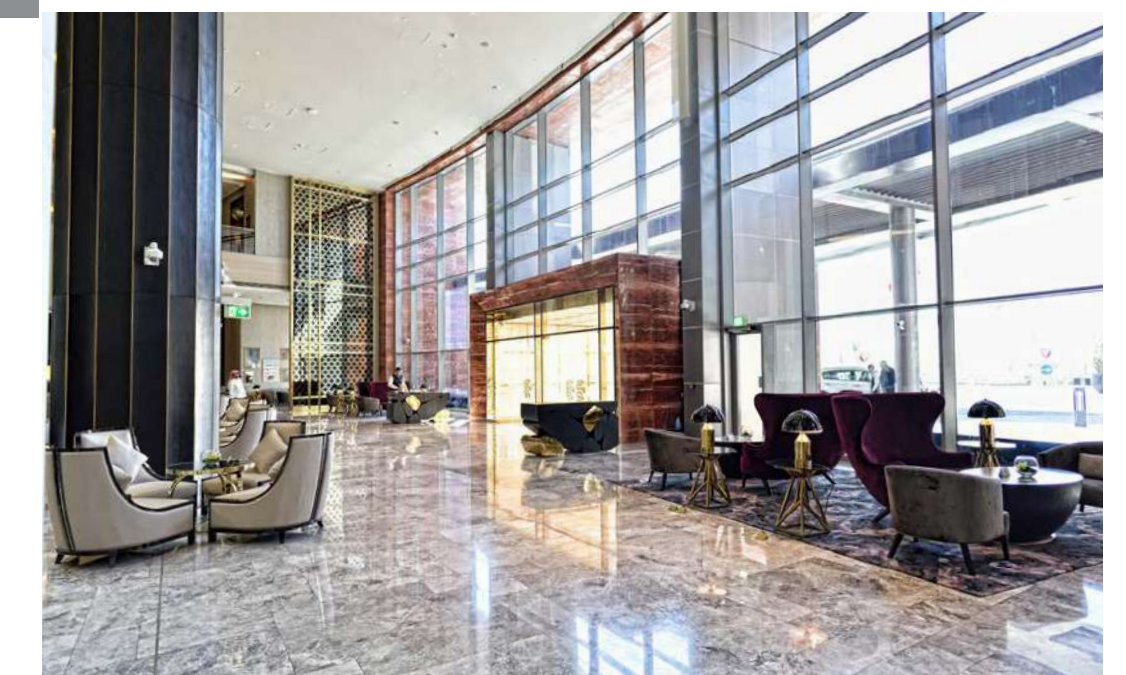
Scope of Work : Supply & installation of marble works  
Total Built Up Area : 12,885 m<sup>2</sup>  
Location : Souq Waqif, Doha, Qatar

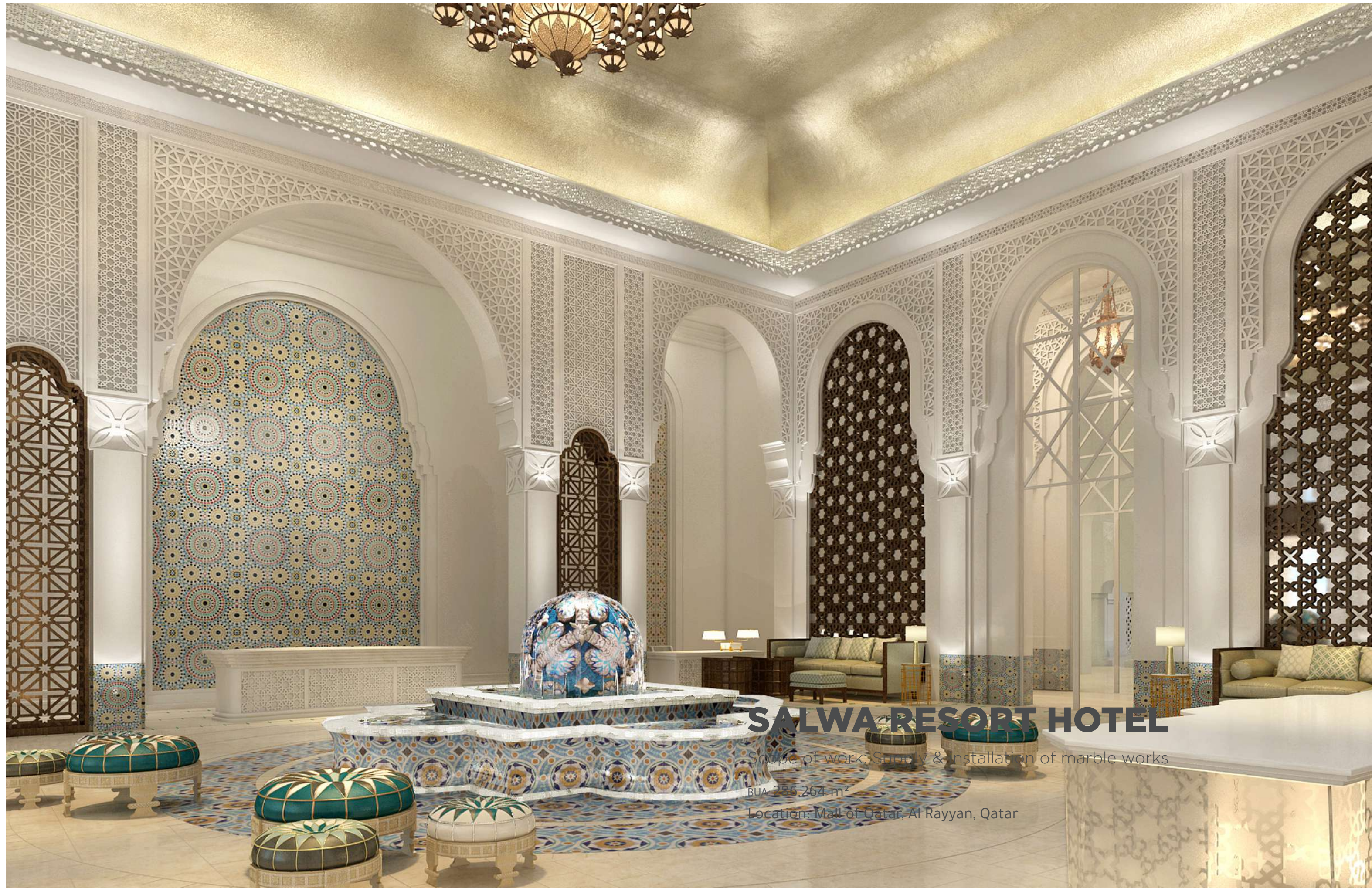




## Al Rayyan Hotel

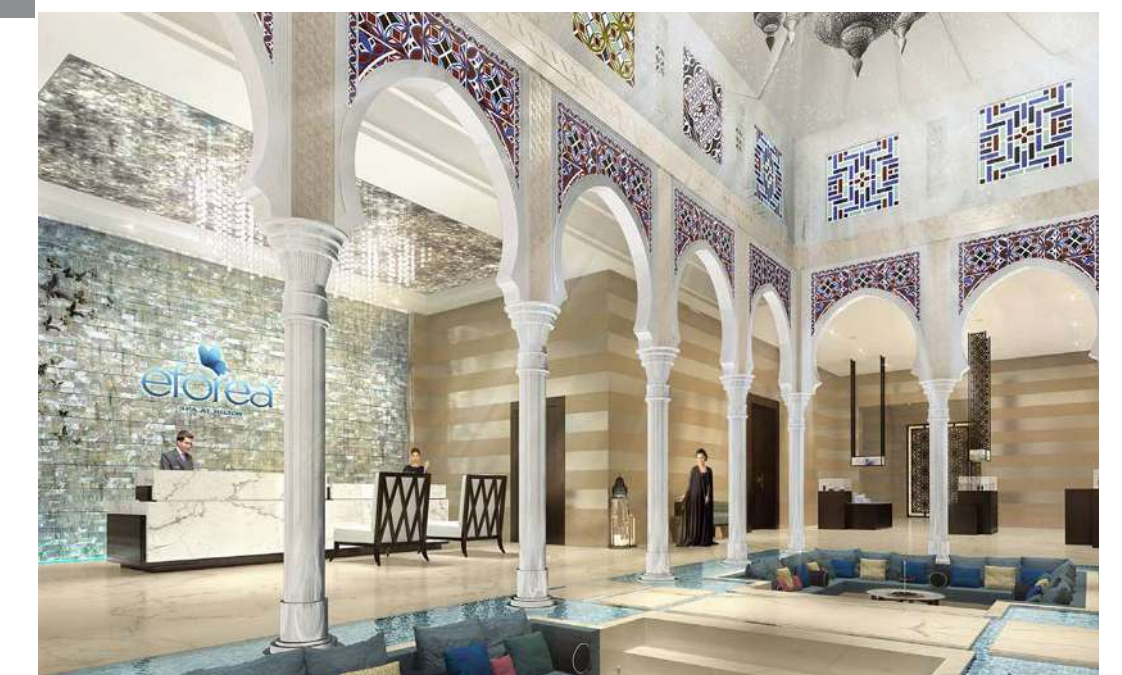
Scope of Work : Supply & installation of marble works  
Total Built Up Area : 286,264 m<sup>2</sup>  
Location : Mall of Qatar, Al Rayyan, Qatar





## Salwa Resort Hotel

Scope of Work : Supply & installation of marble works  
Total Built Up Area : 286,264 m<sup>2</sup>  
Location : Mall of Qatar, Al Rayyan, Qatar







## THE 18 TOWER

Scope of work: Supply & installation of marble works

BUA: 286,264 m

Location: Mall of Qatar, Al Rayyan, Qatar



# SALWA RESORT HOTEL

Scope of work: Supply & installation of marble works

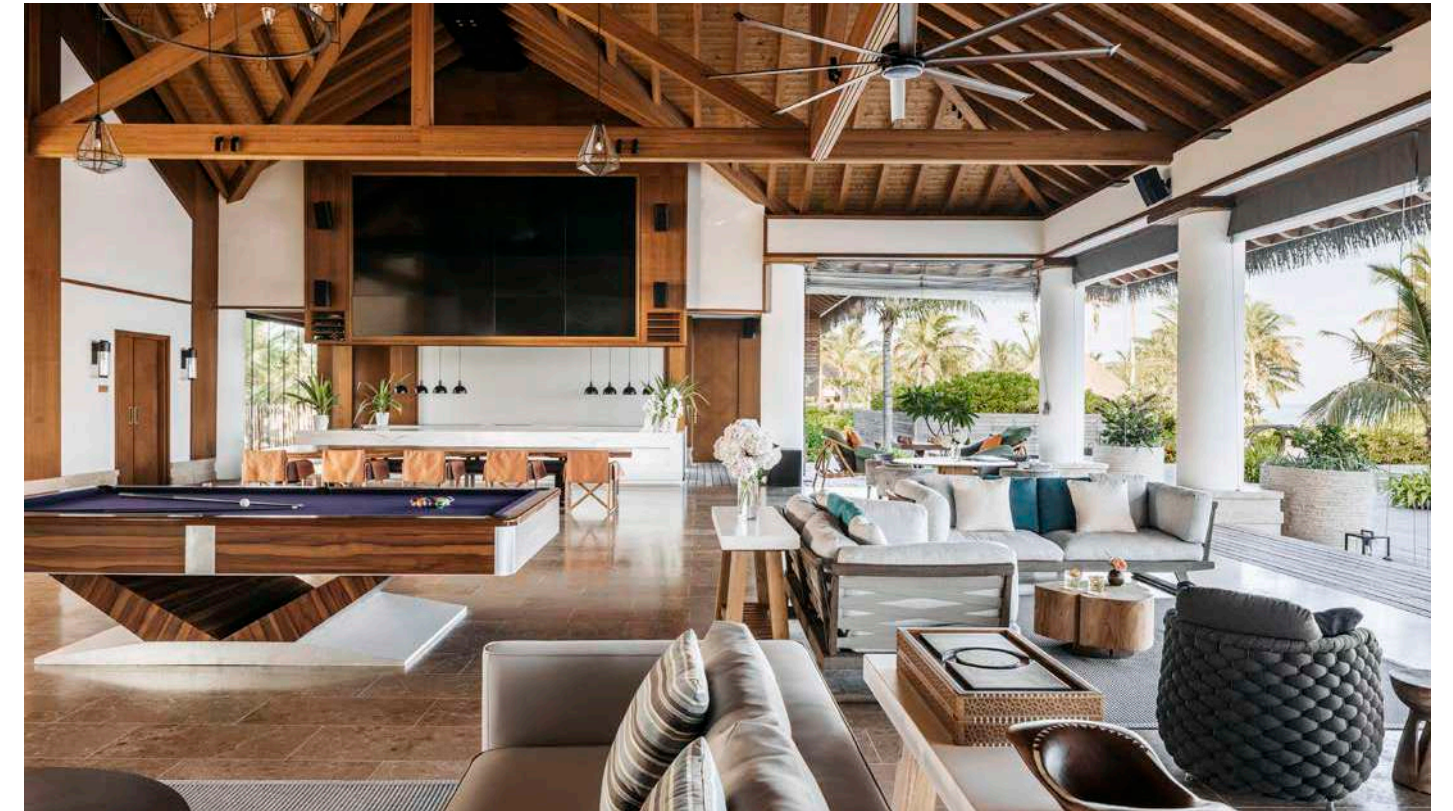
BUA: 286,264 m

Location: Mall of Qatar, Al Rayyan, Qatar





## ITHAAFUSHI MALDIVES





**KIDZMONDO**



## ON-GOING PROJECTS

| Project Name                                                                                            | Contractor | Value in QAR (Approx) | Project Category  | Features                              |
|---------------------------------------------------------------------------------------------------------|------------|-----------------------|-------------------|---------------------------------------|
| Hameydi Villa                                                                                           | UCC        | 104M                  | Villa             | Supply & Installation of Marble Works |
| Design & Build - Lusail Palace (External Wall)                                                          | UCC        | 1.3M                  | Palace            | Supply & Installation of Marble Works |
| "Design & Build - Lusail Palace Packages 2 & 1 (BOH)"                                                   | UCC        | 37M                   | Palace            | Supply & Installation of Marble Works |
| "Design & Build - Lusail Palace Interior Flooring - Package "                                           | UCC        | 32M                   | Palace            | Supply & Installation of Marble Works |
| "Design & Build - Lusail Palace Formal Majlis, Guest House & Mosque - Internal Wall"                    | UCC        | 14M                   | Palace            | Supply & Installation of Marble Works |
| "Design & Build - Lusail Palace P5 Gate Houses"                                                         | UCC        | 2.3M                  | Palace            | Supply & Installation of Marble Works |
| "Design & Build - Lusail Palace Sons & Majlis - Internal Package"                                       | UCC        | 13M                   | Palace            | Supply & Installation of Marble Works |
| "Design & Build - Lusail Palace VIP Lounges & Tunnel, PK05- Internal Package"                           | UCC        | 8.7M                  | Palace            | Supply & Installation of Marble Works |
| "Design & Build - Lusail Palace External Granite Works - Package 2 & 1"                                 | UCC        | 13M                   | Palace            | Supply & Installation of Marble Works |
| "Design & Build - Lusail Palace External Stone Cladding (Hardscape) - Package 5 & 2 ,1"                 | UCC        | 33M                   | Palace            | Supply & Installation of Marble Works |
| "Design & Build - Lusail Palace Daily Majlis (Floor & Wall)"                                            | UCC        | 7.9M                  | Palace            | Supply & Installation of Marble Works |
| "Design & Build - Lusail Palace Package 1,2,5 - External Water Feature Works"                           | UCC        | 3.4M                  | Palace            | Supply & Installation of Marble Works |
| "Design & Build - Lusail Palace Barbeque & Entertainment Building"                                      | UCC        | 4.3M                  | Palace            | Supply & Installation of Marble Works |
| "Design & Build - Lusail Palace Stone Cladding for Doors & Movable Partitions Honey Comb - Supply Only" | UCC        | 3.7M                  | Palace            | Supply & Installation of Marble Works |
| "Design & Build - Lusail Palace UGS, FOB & BOH"                                                         | UCC        | 18M                   | Hotel             | Supply & Installation of Marble Works |
| "Renovation of Doha Marriott Gulf Hotel in Doha Internal Package"                                       | UCC        | 1.9M                  | Hotel             | Supply & Installation of Marble Works |
| "Renovation of Doha Marriott Gulf Hotel in Doha Vanities & Counters"                                    | UCC        | 11.2M                 | Residential Bldg. | Supply & Installation of Marble Works |
| Const. of Seef Lusail Devt. Projects Plots D3/D4                                                        | UCC        | 6.2M                  | Residential Bldg. | Supply & Installation of Marble Works |
| "Const. of Seef Lusail Devt. Projects Plots D3/ D4 Vanity & Counter Top"                                | UCC        | 13M                   | Residential Bldg. | Supply & Installation of Marble Works |

## ON-GOING PROJECTS

| Project Name                                                    | Contractor          | Value in QAR (Approx) | Project Category  | Features                              |
|-----------------------------------------------------------------|---------------------|-----------------------|-------------------|---------------------------------------|
| "Hodaifi Project - Limra Dark Stone Supply Only"                | Elegancia Landscape | 3.6M                  | Palce             | Supply & Installation of Marble Works |
| PIH New Offices Project @ Lusail Com18-                         | Pentagram           | 3.4M                  | Office Tower      | Supply & Installation of Marble Works |
| Villa 29 at the Pearl                                           | UCC                 | 5.7M                  | Private Villa     | Supply & Installation of Marble Works |
| VIP Area 1000 @ Dukhan                                          | UCC                 | 6.6M                  | Private Villa     | Supply & Installation of Marble Works |
| Abeer Residence                                                 | Pentagram           | 6.6M                  | Private Villa     | Supply & Installation of Marble Works |
| Madam Sumaiya - Villa 30                                        | UCC                 | 6.9M                  | Private Villa     | Supply & Installation of Marble Works |
| Sheikh Mohammed Palace                                          | SAK                 | 4.3M                  | Palace            | Supply & Installation of Marble Works |
| Design & Const. of NED Doha                                     | UCC                 | 11.5M                 | Hotel             | Supply & Installation of Marble Works |
| Mixed Used Bldg. at Marina District Plot no. 12D at Lusail City | UCC                 | 5.2M                  | Residential Tower | Supply & Installation of Marble Works |
| Design & Build of Lusail Palace - 2nos of Villas Compound       | UCC                 | 11.3M                 | Palace            | Supply & Installation of Marble Works |
| The View Hospital (Main Package)                                | UCC                 | 1.7M                  | Hospital          | Supply & Installation of Marble Works |
| Wadi Al Sail Office Building with Data Center                   | Al Balagh           | 3.7M                  | Office Tower      | Supply & Installation of Marble Works |

## COMPLETED PROJECTS

| Project Name                                 | Contractor                     | Value in QAR (Approx) | Project Category              | Features                                                         |
|----------------------------------------------|--------------------------------|-----------------------|-------------------------------|------------------------------------------------------------------|
| Mall Of Qatar                                | Urbacon Trading & Contracting  | 22.6M                 | Mall                          | Supply & Installation of Marble Works                            |
| Hilton Hotel                                 | Urbacon Trading & Contracting  | 4M                    | Hotel                         | Main Lobbies, Typical Lift Lobbies. Waterjet Decorative Flooring |
| Souq Waqif Hotel                             | Urbacon Trading & Contracting  | 2M                    | Hotel                         | Supply & Installation of Marble Works                            |
| Sheraton Hotel                               | Urbacon Trading & Contracting  | 8M                    | Hotel                         | Supply & Installation of Marble Works                            |
| Curio Hotel                                  | Urbacon Trading & Contracting  | 21.5M                 | Hotel                         | Supply & Installation of Marble Works                            |
| Island Palace @ Sumaysimah                   | Urbacon Trading & Contracting  | 8.4M                  | Palace                        | Supply & Installation of Marble Works                            |
| Al Wajba Palace                              | Urbacon Trading & Contracting  | 8.6M                  | Palace                        | Supply & Installation of Marble Works                            |
| Villa Al Azaiba in Muscat Oman               | Urbacon Trading & Contracting  | 8M                    | Palace                        | Supply & Installation of Marble Works                            |
| Union Residential Tower                      | Urbacon Trading & Contracting  | 2.5M                  | Residentail Bldg.             | Installation of Stone Works                                      |
| Anantara Doha Island Resort / Banana Island  | Urbacon Trading & Contracting  | 5M                    | Villa & Resort                | Antic Finish, Limestone Counters, Flooring & Cladding            |
| ISF Development                              | Urbacon Trading & Contracting  | 14M                   | Government Camp               | Supply & Installation of Marble Works                            |
| Highness Office @ Dafna                      | Urbacon Trading & Contracting  | 2.2M                  | VIP Office                    | Luxury Waterjet Design Works                                     |
| Sheikh Abdul Rhaman Al Thani - Massila Villa | Urbacon Trading & Contracting  | 4.5M                  | Private Villa                 | Supply & Installation of Marble Works                            |
| Dafna Beach Majlis                           | Urbacon Trading & Contracting  | 1.2M                  | Private Villa                 | Supply & Installation of Marble Works                            |
| Mr. Ramez Villa                              | Urbacon Trading & Contracting  | 3.9M                  | Private Villa                 | Supply & Installation of Marble Works                            |
| Qamara Majlis                                | Urbacon Trading & Contracting  | 1M                    | Private Villa                 | Supply & Installation of Marble Works                            |
| Al Emadi - Al Khor Residence                 | Urbacon Trading & Contracting  | 4.7M                  | Private Villa                 | Supply & Installation of Marble Works                            |
| Mr. Moutaz Villa                             | Urbacon Trading & Contracting  | 2M                    | Private Villa                 | Supply & Installation of Marble Works                            |
| Rakan Villa                                  | Urbacon Trading & Contracting  | 2.2M                  | Private Villa                 | Supply & Installation of Marble Works                            |
| Sheikha Maryam Villa                         | Urbacon Trading & Contracting  | 5.3M                  | Private Villa                 | Supply & Installation of Marble Works                            |
| Al Hazza Villa                               | Urbacon Trading & Contracting  | 1.4M                  | Private Villa                 | Supply & Installation of Marble Works                            |
| Al Mannai Villa                              | Pentagram Design & Contracting | 1.3M                  | Private Villa                 | Supply & Installation of Marble Works                            |
| Bhari Villa                                  | Pentagram Design & Contracting | 1M                    | Private Villa                 | Supply & Installation of Marble Works                            |
| Lusail Office Tower                          | Urbacon Trading & Contracting  | 4M                    | Office Tower                  | Supply & Installation of Marble Works                            |
| Al Rafaa Villa                               | Urbacon Trading & Contracting  | 4.8M                  | Private Villa                 | Supply & Installation of Marble Works                            |
| Bu Thelah Farm                               | Urbacon Trading & Contracting  | 10M                   | Farm & Bldg. Infrastructure   | Supply & Installation of Marble Works                            |
| Private Villa @ Al Khor                      | Pentagram Design & Contracting | 3.3M                  | Private Villa                 | Supply & Installation of Marble Works                            |
| Renovation Works @ Amiri Diwan               | Urbacon Trading & Contracting  | 6.4M                  | Palace                        | Supply & Installation of Marble Works                            |
| Salwa Resort & Infrastructure                | Italian Style Qatar            | 7.8M                  | Resort & Bldg. Infrastructure | Supply & Installation of Marble Works                            |

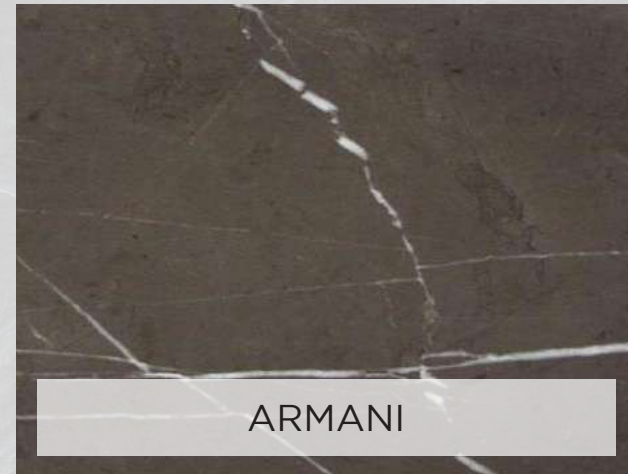
## COMPLETED PROJECTS

| Project Name                                                            | Contractor                     | Value in QAR (Approx) | Project Category  | Features                              |
|-------------------------------------------------------------------------|--------------------------------|-----------------------|-------------------|---------------------------------------|
| Design & Build of Amiri Diwan Additional Annex Bldg.                    | Italian Style Qatar            | 5.4M                  | Palace            | Supply & Installation of Marble Works |
| Residential Tower Viva Bhariya 8 @ Pearl Qatar                          | Urbacon Trading & Contracting  | 5.5M                  | Residential Bldg. | Supply & Installation of Marble Works |
| Sheikh Mishal Palace                                                    | Direct Line Trading            | 2M                    | Palace            | Supply & Installation of Marble Works |
| Hala Tower (5 Star Plus Hotel @ West Bay)                               | Sak Contracting                | 4M                    | Hotel             | Supply & Installation of Marble Works |
| Panorama Towers (34250)                                                 | Urbacon Trading & Contracting  | 14M                   | Hotel             | Supply & Installation of Marble Works |
| Lusail Com 18                                                           | Urbacon Trading & Contracting  | 7M                    | Office Tower      | Supply & Installation of Marble Works |
| Ithaafushi Resort - Maldives                                            | Ithaafushi Maldives            | 5M                    | Villa & Resort    | Supply & Installation of Marble Works |
| PM Villa & Majlis                                                       | Pentagram Design & Contracting | 2M                    | Villa             | Supply & Installation of Marble Works |
| Dafna Palace Renovation                                                 | Pentagram Design & Contracting | 5.2M                  | Palace            | Supply & Installation of Marble Works |
| Al Wukair Villa Project                                                 | Pentagram Design & Contracting | 5.5M                  | Villa             | Supply & Installation of Marble Works |
| Design & Build , Replacement of the Flooring of Amiri Diwan Upper Floor | Italian Style Qatar            | 4.3M                  | Palace            | Supply & Installation of Marble Works |
| Private Villa @ Bani Hajer (Abou Khaled)                                | Pentagram Design & Contracting | 1.5M                  | Villa             | Supply & Installation of Marble Works |
| Lusail Palace - Supply Only                                             | Elegancia Landscape            | 13M                   | Palace            | Supply of Grey Granite                |
| Ras Laffan Palace                                                       | Urbacon Trading & Contracting  | 4.2M                  | Palace            | Supply & Installation of Marble Works |
| Pearl Villa M                                                           | Al Balagh Contracting          | 1.1M                  | Villa             | Supply & Installation of Marble Works |
| Lusail Marina Com18- - Padel Court                                      | Urbacon Trading & Contracting  | 1M                    | Office Tower      | Supply & Installation of Marble Works |
| Lusail Palace - TSE DLB, Check Point                                    | Urbacon Trading & Contracting  | 1.9M                  | Palace            | Supply & Installation of Marble Works |
| Mohammad Bin Hamad Villa Project                                        | Pentagram Design & Contracting | 1.1M                  | Villa             | Supply & Installation of Marble Works |
| Const. of Seef Lusail Devt. Projects Plots D1/D2                        | Urbacon Trading & Contracting  | 13.8M                 | Residential Bldg. | Supply & Installation of Marble Works |
| "Const. of Seef Lusail Devt. Projects Plots D1/D2 Vanity & Counter Top" | Urbacon Trading & Contracting  | 1.1M                  | Residential Bldg. | Supply & Installation of Marble Works |
| Private Villa & Majlis - Nasser Al Khelafi                              | Pentagram Design & Contracting | 3M                    | Villa             | Supply & Installation of Marble Works |
| Integrated Families Housing in Al Wakra                                 | Urbacon Trading & Contracting  | 19M                   | Family Housing    | Supply & Installation of Marble Works |
| Amiri Terminal at HIA                                                   | Al Ali Engineering             | 2.8M                  | Amiri Terminal    | Supply & Installation of Marble Works |

A collage of various material samples including marbles, granites, and woods, with a central text overlay. The samples are arranged in a fan-like pattern, overlapping each other. The colors range from light beige and cream to dark grey and black, with some featuring intricate patterns and textures. The central text is white and bold, set against a dark grey rectangular background.

# MARBLE LINES

# | MARBLE LINE GREY



ARMANI



BRECCIA ANTICA



GREY EMPERADOR



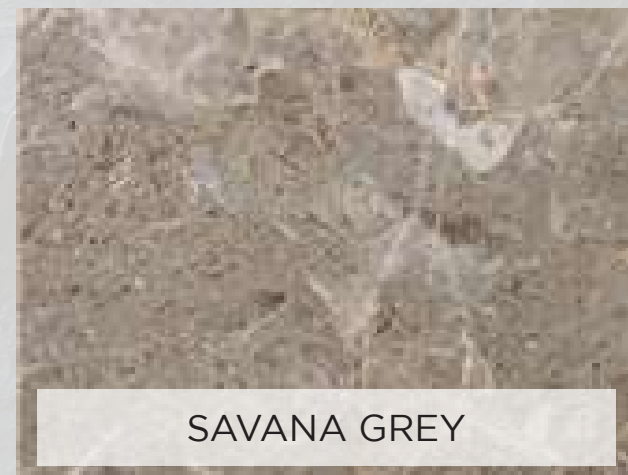
GREY MARQUINA



GREY TIFLET



GRIS CEHEGIN



SAVANA GREY



SERPEGGIANTE GREY



TALA MARRON

# | TRAVERTINE LINE



TRAVERTINE RED



TRAVERTINO BEIGE



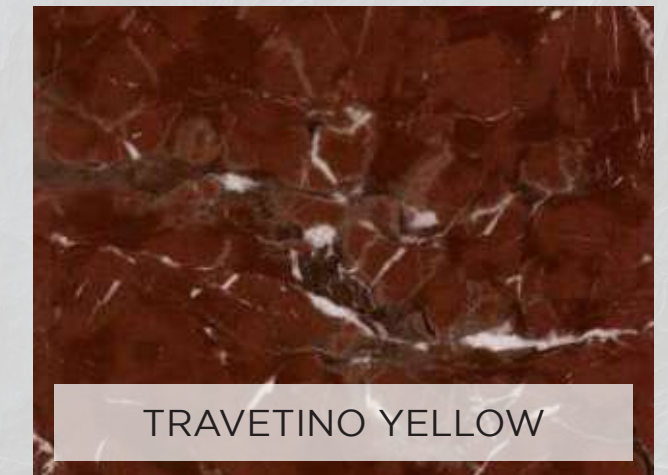
TRAVERTINO NOCE



TRAVERTINO SILVER DARK



TRAVERTINO SILVER



TRAVETINO YELLOW

## | ONYX LINE



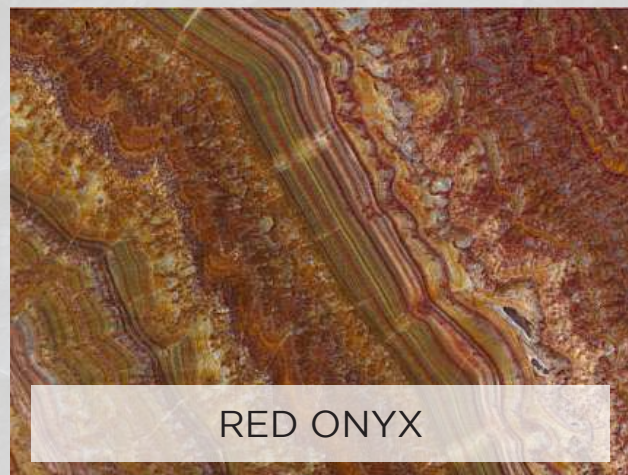
GREEN ONYX



HONEY ONYX



RED ONYX CROSS CUT



RED ONYX



WHITE ONYX



YELLOW ONYX



RAIN FOREST BROWN



ROSA AURORA



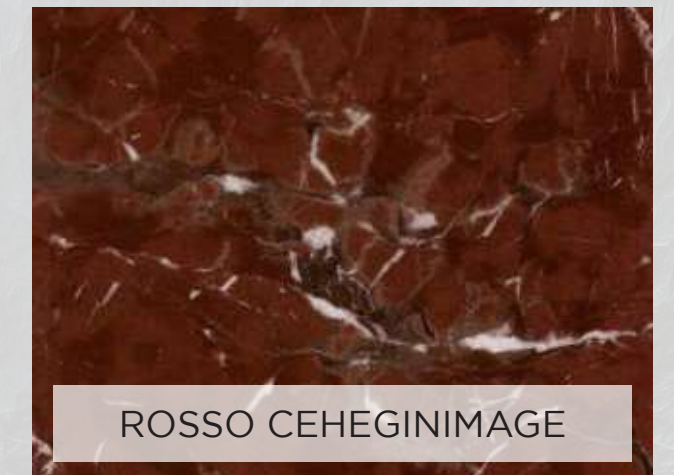
ROSA VALENCIA



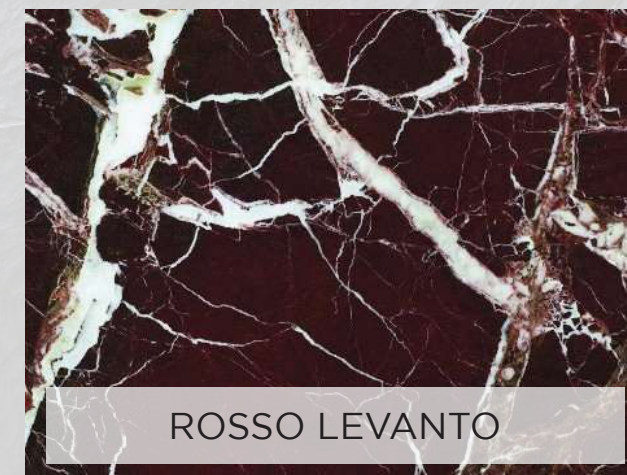
ROSSO ALICANTE



ROSSO ASSIAGO



ROSSO CEHEGINIMAGE



ROSSO LEVANTO



ROSSO RUPAS



ROUGE DU ROI

## | MARBLE LINE RED

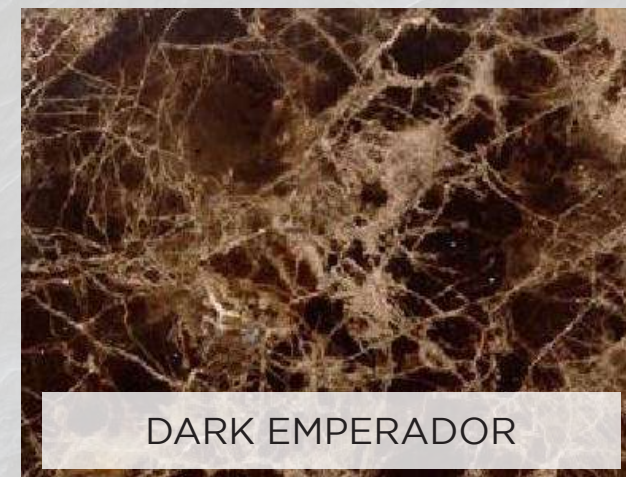
## | MARBLE LINE BEIGE



## | LIMESTONE LINE



## | MARBLE LINE BROWN



## | GRANITE LINE WHITE



ARABESCATO VAGLI



ARISTONE WHITE



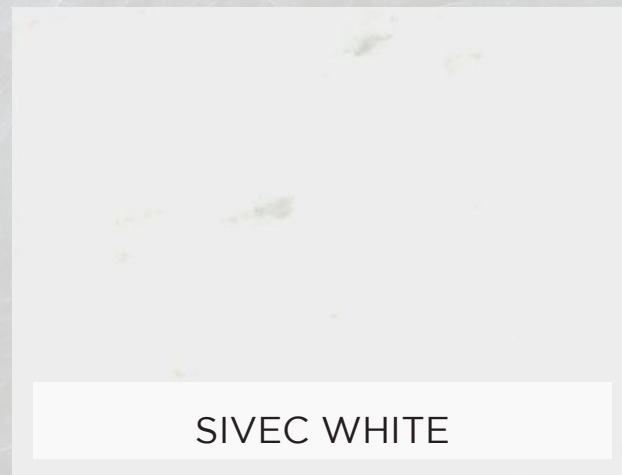
BIANCO CARRARA



CALACATTA VAGLI ORO



CARRARA GIOIA VENATINO



SIVEC WHITE



STATUARIO BIANCO



THASSOS WHITE



VIETNAM WHITE

## | MARBLE LINE YELLOW



GIALLO REALE ROSATO



GIALLO REALE



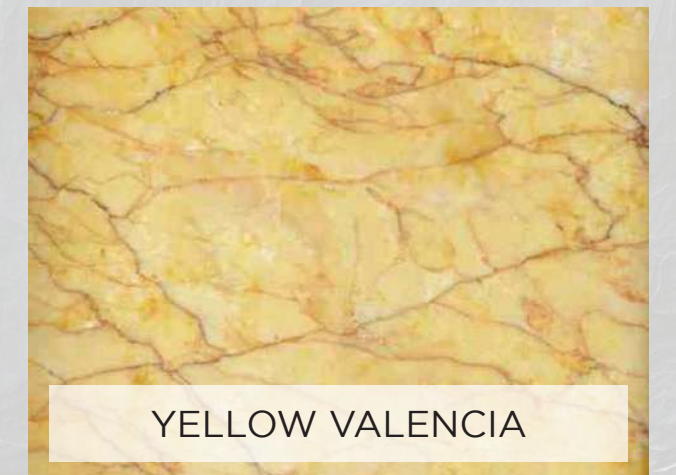
GIALLO SIENNA



GOLDEN SPIDER



SUNNY YELLOW



YELLOW VALENCIA

| GRANITE LINE



| GRANITE LINE

## | MARBLE LINE GREEN



## | MARBLE LINE BLACK



 **elegancia**  
stone